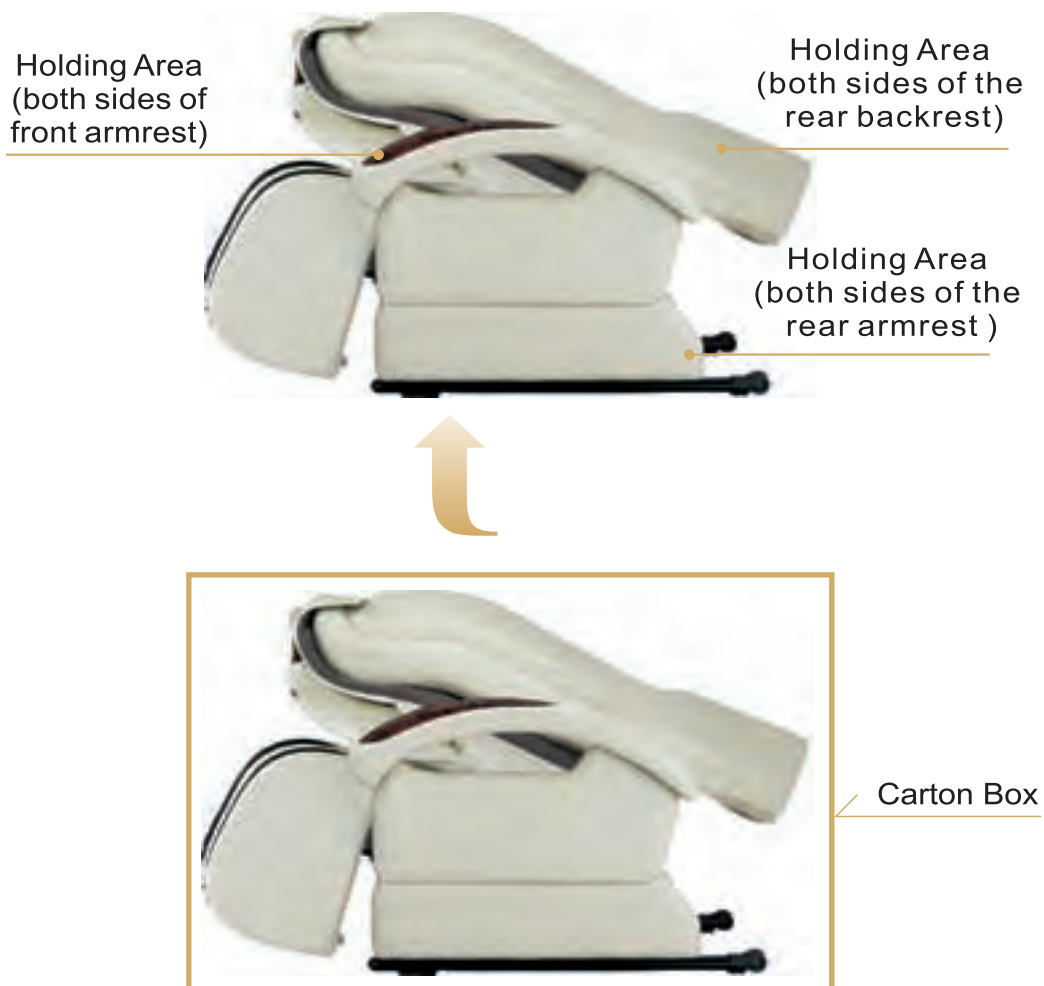


# Assembling

## ▣ STEP 1 : Setting up the Massage Chair

- Remove the chair from carton box.
- 2 or more people are needed to lift up the chair, according to the holding areas shown in the diagram below.



# Assembling

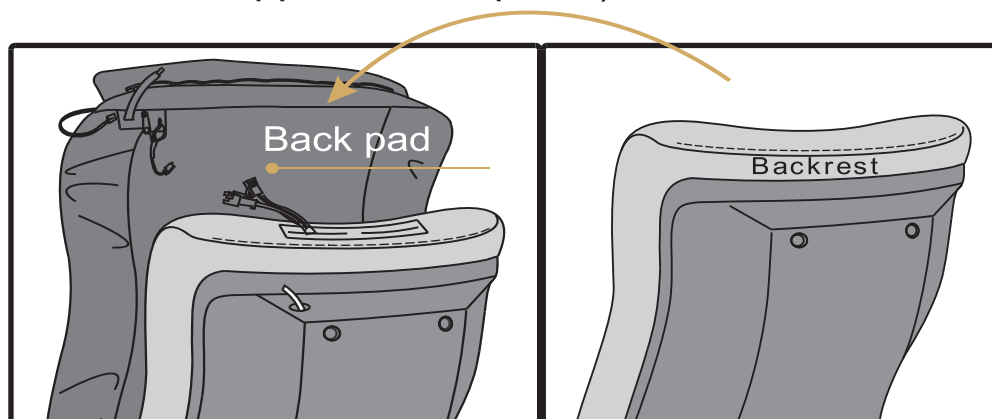
## STEP 2 : Setting up the Massage Chair

- When the massage chair is removed from the carton box, raise the backrest
- Raise the backrest to approx. 120°, until a "CLICK" Sound is heard, to fix the backrest into position.



## STEP 3 : Setting up the Back Pad

- Place the back pad against the backrest (DO NOT attach the zipper at this point)

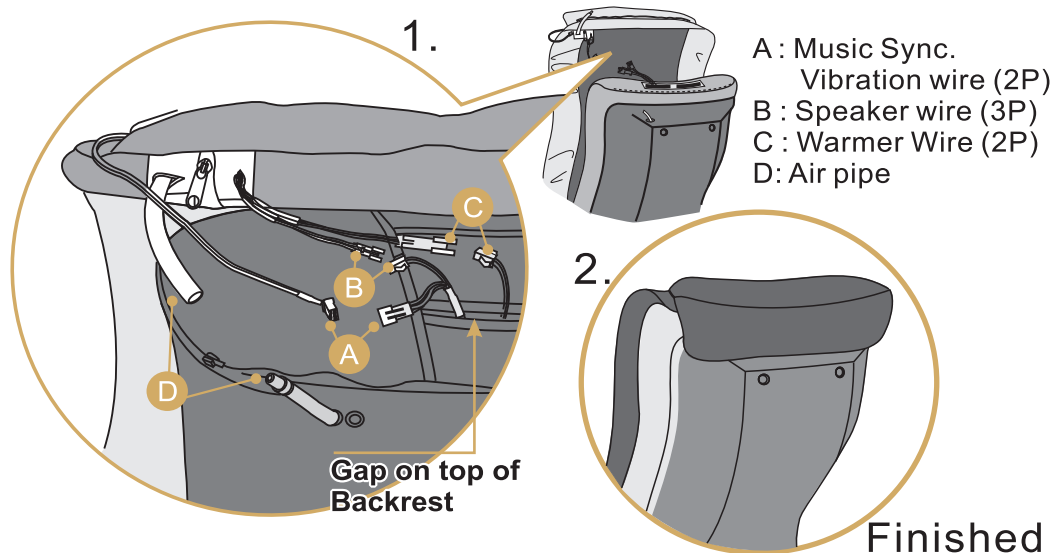


# Assembling



## STEP 4 :

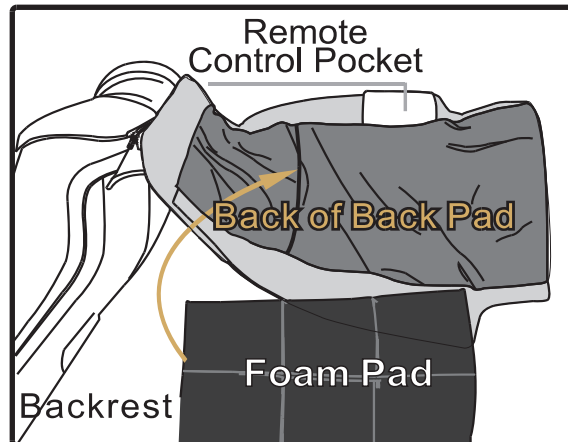
Connect plug (A) Music Sync. Vibration Wire, (B) Speaker Wire, (C) Warmer Wire to the other end of wires from Backrest. Zip the Back Pad to the Backrest to complete this step. Attach (D) Air Pipe to the Back Cover end.



## STEP5: Remote control Pocket and Setting up the Back Pad

The remote control can be stored when not in use in use in this pocket behind the back pad

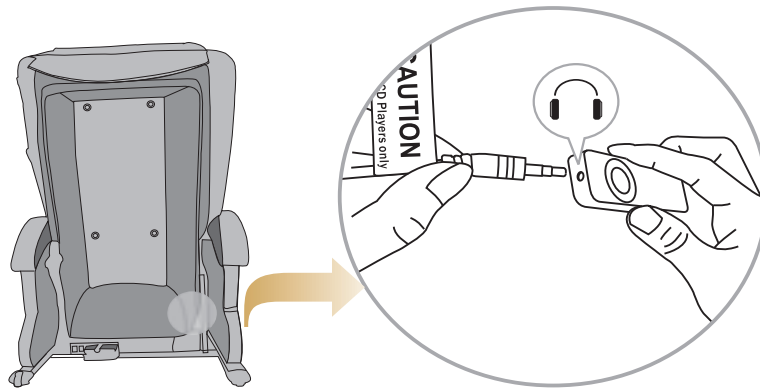
(2) foam pads are included which can be added and removed to increase and decrease the intensity of the massage for different users, while soft tissue is acclimating to regular stimulation and or when not using the chair for massage purposes.



# Assembling

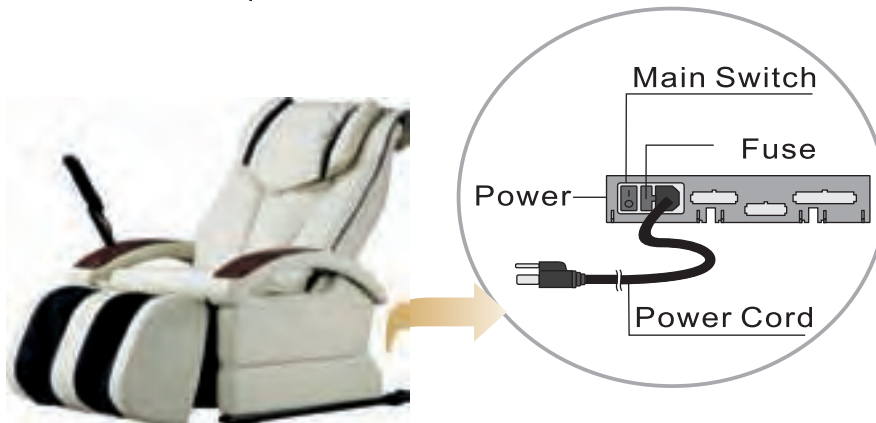
## STEP 6 : Connecting Audio Line

- Please connect audio line with CD/mp3.



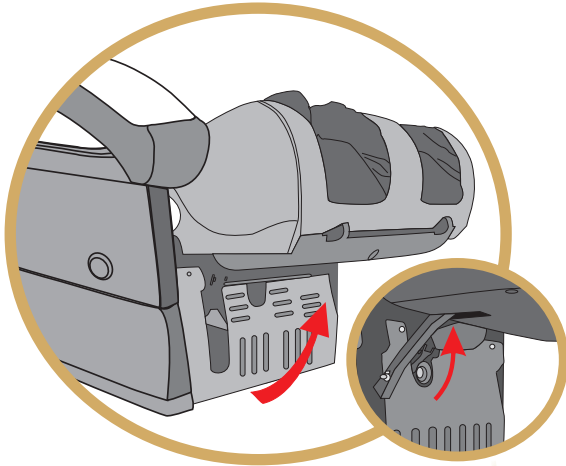
## STEP 7 : Main Power Setup

- Attach the power wire as in the picture and switch on the power. (push in on the upper half of the switch as labeled I, push in on the lower half of the switch as labeled O)
- Please check for obstacles when adjusting the Backrest / Footrest Up/Down.

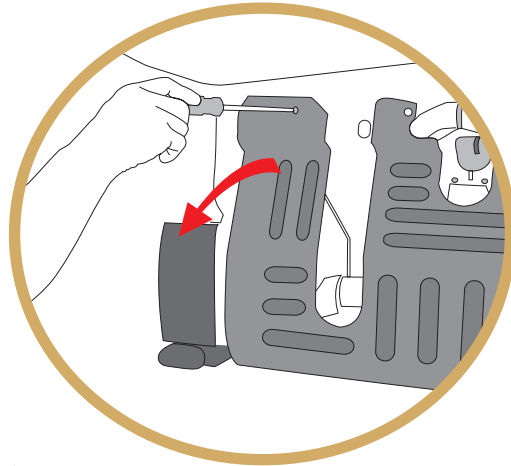


# Assembling

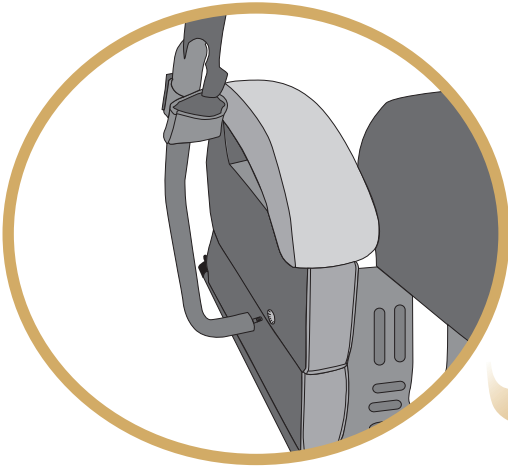
## STEP 8 : Remote Controller Stand Setup Instructions



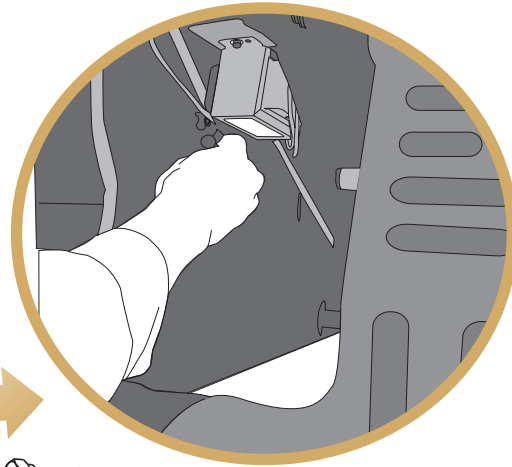
1. Lift up the footrest



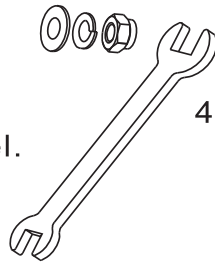
2. Unscrew and bend down the protector board



3. Attach the remote controller stand into the right side panel.



4. Insert washer/ spring washer a 13mm screw hat and fasten all with a wrench.



# Assembling

## STEP 9: Removing Armrest Cover

Stretch the Armrest Cover outwards then upwards from the front, and remove the Cover from rear.

Armrest Cover



## Storage of Remote Controller

There are two ways to store Remote Controller, as following:

- Magnetically stick to the Stand Holder
- In the pocket behind Back Pad

